



OUTWOOD NEWS

**OUTWOOD
NEWS**

COPY DATE

**DECEMBER
& JANUARY
2025**

**Friday
22nd NOVEMBER**

*Late copy cannot
be inserted without
prior agreement.*

Outwood Matters
is the village email
distribution list.
If you would like
to be included on
this please email
outwoodsmatters
@gmail.com

Please submit
copy to:
anne.morle
@outwood.org

Shoestring productions presents

Friday 13th December

Evening

7pm for 7:30pm start

Saturday 14th December

Matinee

2pm for 2:30pm start

Evening

7pm for 7:30pm start



Adult £14 | Child (Up to 12yrs) £10

Box Office: 07703342921

— or —

Email: shoestringp@gmail.com

Lloyd hall, Brickfield Road, Outwood, Surrey RH1 5QX

NOVEMBER 2024



Maison

Estate Agency. Reimagined.

We provide you with an experienced local partner from Outwood, available seven days a week with no binding contracts and a bespoke marketing plan.

james@maisonpartnership.com
01883 415995

maisonpartnership.com
@maisonpartnership

- ✓ Mot's
- ✓ Servicing
- ✓ Cambelts
- ✓ Diagnostics
- ✓ Clutches
- ✓ Batteries
- ✓ Tyres
- ✓ Exhausts
- ✓ Brakes
- ✓ Air con. etc.



A friendly, trustworthy, family run business which has been built upon recommendation since 1966.

For more information...

Please check out our website or give us a call.



All work is carried out in-house

Good Garage Scheme Member Since 2007



01342 842132

www.windmill-garage.co.uk

Outwood Common, Outwood, Surrey, RH1 5PW

TABLE TOP SALE

SATURDAY 2nd NOVEMBER

LLOYD HALL 10.30am - 2.30pm

Baby Equipment ♦ Toys & Games ♦ Pictures ♦ Collectables
Xmas Decorations ♦ Plants ♦ Seeds & Bulbs ♦ Bric-a-brac
Household Items ♦ Bedding ♦ Clothing ♦ Jewellery
Xmas Cards & Gifts ♦ Lots, Lots More

COMMUNITY EVENT LED BY THE BRITISH LEGION



Any enquiries contact jombarber@hotmail.com
or phone 07967 157402

REFRESHMENTS WILL BE
AVAILABLE FROM THE
"POPPY PANTRY"



WE WILL BE HOSTING
THE CHRISTMAS MARKET
AGAIN THIS YEAR AT
WOLDINGHAM SCHOOL
ON

FRIDAY 29th NOVEMBER.

The market is a very special outdoor festive shopping event. It will feature over 40 exhibitors selling luxury or unique goods and artisan fayre and will run from 4pm - 7.30pm in the beautiful quadrangle, adjacent to the mansion. This is the oldest part of the buildings and will provide a wonderful atmospheric backdrop to the market.

The market is a charity event raising funds for bursaries to educate girls.

ENTRY IS £5 FOR ADULTS AND FREE FOR CHILDREN.

Once again there will be plenty of festive catering, Christmas lighting and live carols.

CHURCH NEWS

CHARLES' CHATTERINGS



November is the month of Remembrance, and we shall hear echoed on Remembrance Sunday the words:

They shall grow not old as we that are left grow old.
Age shall not weary them, nor the years condemn.
At the going down of the sun and in the morning, we will
remember them.
We will remember them.

But how in our modern era do we remember those who have given their lives in the First and Second World Wars when our memories don't stretch that far back. How do we instil in the young people of today the importance that those events of 1914 - 1918 and 1939 - 1945 had in securing peace in our country.

We can often find ourselves with selective memory, which helps us to focus on our accomplishments; giving us the morale boost we would need should we be confronted by similar situations in the future. Selective memory can be helpful as we make our way through life; but it can also be a trap that prevents us from seeing clearly the reality of what we have been through, hampering our sense of gratitude towards those who have helped us along the way. And this is never more critical than when selective memory affects an entire nation; it is never more dangerous than when selective memory becomes selective remembrance.

Remembrance informs our gratitude. The way in which we remember informs the way in which we give thanks to others, and indeed to God, according to justice for what they have done for us. Our Remembrance needs to reflect on all those who have given their lives in service to their country down the ages, not just the First and Second World Wars but also our much more recent conflicts where lives have been lost.

The world could be a very different place if VE Day (8th May 1945: when Germany unconditionally surrendered) had never dawned, and the oppression of totalitarianism, racial hate, and fascism would have held sway across an entire continent...

Remembrance Day holds a very significant place in the lives of those who serve in our Armed Forces. When I was a chaplain with the Royal Air Force, Remembrance Sunday was the day when our troops would be out on show to the general public, best uniforms, shoes you could see your reflection in, marching through the streets, attending services and standing to attention at the War Memorials. But Remembrance Day (11th November) itself was always marked as a day for our service personnel to reflect on those that they knew who had made the ultimate sacrifice, away from the public, just us ... remembering.

CHURCH NEWS

Remembrance Day holds a very significant place in the lives of those who serve in our Armed Forces. When I was a chaplain with the Royal Air Force, Remembrance Sunday was the day when our troops would be out on show to the general public, best uniforms, shoes you could see your reflection in, marching through the streets, attending services and standing to attention at the War Memorials. But Remembrance Day (11th November) itself was always marked as a day for our service personnel to reflect on those that they knew who had made the ultimate sacrifice, away from the public, just us ... remembering.

Today we call all of them to mind in one single act of true remembrance. To them all today goes out our debt of gratitude. And for them our prayers ascend to God the Father, that he may grant their souls eternal rest, that after the hardships they endured for the cause of justice they may be welcomed into the joy of his kingdom.

The Bishop to the Armed Forces sent out a letter last month asking us to highlight the importance of those still serving and those who have served in our dangerous world. Today there are 172,000 serving in regular and reserve forces and 1.9 million veterans in the UK.

A prayer for those deployed on active service

*Almighty God,
stretch forth your mighty arm
to strengthen and protect our armed forces;
grant that meeting danger with courage
and all occasions with discipline and loyalty,
they may truly serve the cause of justice and peace;
to the honour of your holy name,
through Jesus Christ our Lord.
Amen.*

With my best wishes and prayers

Charles

Rev'd Charles Sargent
Associate Priest
Windmill United Benefice
Smallfield Church Hall
Redehall Road
Smallfield, RH6 9QL
windmillchurches3@gmail.com

Rev. Alan Bayes
The Rectory, 5 TheAcorns, Smallfield, RH6 9QJ
Email:: revalanbayes@aol.com

CHARITY

QUIZ NIGHT

SATURDAY 2ND NOVEMBER, 7PM

LLOYD HALL, OUTWOOD, RH1 5QE

INCLUDES FISH & CHIP SUPPER
CASH BAR & RAFFLE

TICKETS
£20 PP

BOOK YOUR TICKETS OR TABLES BELOW VIA
TEAMS OF 6-8 OR INDIVIDUALS/COUPLES WELCOME TOO!

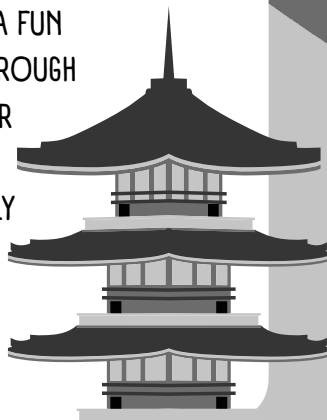
DEBBIE	LYNNE	SALLIE	SHARON
07778 818189	07879 882707	07754 659686	07909 442673

JOIN DEBBIE, LYNNE, SALLIE AND SHARON FOR A FUN
NIGHT AHEAD OF OUR EPIC 400KM CYCLE RIDE THROUGH
VIETNAM AND CAMBODIA, RAISING FUNDS FOR
BREAST CANCER NOW.

ALL PROFITS FROM THE EVENING GO DIRECTLY
TO THIS AMAZING CHARITY.
WE HOPE YOU CAN JOIN US!

**BREAST
CANCER
NOW** The research
& care charity

women
v cancer



OCTOBER 2024

As Autumn gathers, our members are packing in activities before the shorter days are upon us. We have been enjoying convivial lunches and almost half our members visited Hammerwood Park in Sussex where we were treated to a fascinating tour of the house (designed by La Trobe) by the owners, David and Anne-Noelle Pinnegar. As well as marvelling at the structural improvements being undertaken, we were treated to music on the many historical instruments contained in the different rooms of the house.



Lunch at The Bell

David explains to our members how the house was constructed on classical lines.



Our fingers have been busy creating knitted and crocheted flowers to contribute to the coming Surrey Federation display to highlight the need to stop violence against women, outside headquarters in Guildford.



Many keyboards and other instruments such as harps predominate within the building.



Our speaker at October's meeting was Neil Sadler, who spoke to us about his experiences working as a policeman at Gatwick Airport. A lively raconteur, Neil took us through the history of the airport site (it was originally a race horse track!) which is the second busiest single runway airport in the world. As well as sharing funny anecdotes, he made us understand some of the challenges faced by airport and plane cabin crew. Rowdy and drunken behaviour are common challenges for staff and the darker side of policing can include deceased stowaways and terrorist threats.

Our next meeting will be our AGM on Tuesday 5th November.

Elizabeth Dyke



CHARTERED DESIGNERS PROJECT MANAGERS

Architecture ❖ Interior Design
Engineering ❖ Surveying
Town Planning ❖ Project Management

**For all aspects of building
design and construction**

Contact Bill Morle FCSD MFPWS

01342 843336

email: bill@a-bdesigns.co.uk



Cheeld Wheeler & Co

CHARTERED CERTIFIED ACCOUNTANTS

Taxation and Accountancy services for:

- Individuals
- Partnerships
- Charities
- Limited Companies

Call: **01737 224891**

www.cheeldwheelerandco.co.uk

OUTWOOD HISTORY GROUP

Does anyone know about the Lloyd Family, any stories about them personally? How did they take part in village life, or maybe prop up the bar in the Bell?

I would like to write something about the family that played such a big part in Outwood's history.

The Outwood History Group meets on the second Tuesday of each month.

David

01342 843661

WANT TO ADVERTISE IN OUTWOOD NEWS?

This space is just £90 p.a.
- only £9 per edition!

For more information
and to check availability

please contact

John Mankelov:

01342 842764

or

Anne Morle:

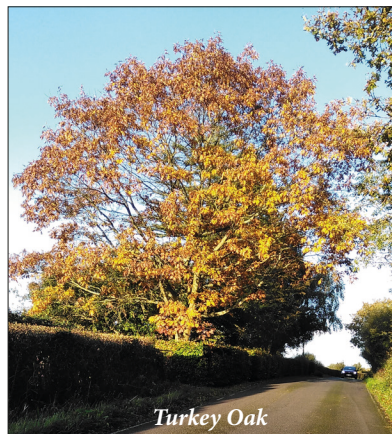
01342 843336

anne.morle@outwood.org

NATURE WATCH

Over the last month we've had a wide variation, or should I say unpredictability, in our weather, swinging from a couple of days of glorious sunshine and blue skies interspersed with days that start and finish with rain and dark grey clouds usually accompanied by strong winds, being the leftovers of yet another Caribbean hurricane. Temperatures have ranged from a near all-time record temperature for the day of the month of close to 80°, followed a few days later by an overnight ground frost. Somehow half-hardy garden plants like dahlias have somehow got away with things and have continued flowering; similarly, one or two garden roses have produced a smattering of blooms and a late season bouquet for the house.

Moles have continued excavating for worms and for the first time in three years have ventured out from the edges of the flower beds onto our lawns. Out in the countryside autumn leaf colouring continues to build up slowly with the rich golden yellow of field maple, the intense orange red of the spindle tree (*Euonymus alatus*) and the bronze, yellow and red blend of the turkey oak, like the one on the boundary of Gayhouse Farm. The number of grey squirrels this year seems to be more numerous than in recent years somewhat confirmed by the number of their dead bodies on the local lanes. They have been very active over the last six weeks building up their winter reserves and this includes burying acorns in garden pots.



The National Trust contractors have started the autumn/winter felling schedule of yet more victims of ash die-back, leaving the timber for wildlife, food for fungi and clearings in the woodland, which will be quickly exploited by the dormant seeds of more ash, hornbeam and woodland flowers like bluebells. Ash trees are often looked upon as a weed because its bounteous seed production plus very rapid growth ensures they outcompete many other plants. But its hard timber has a wide range of applications such as furniture manufacturing, shock absorbent handles for tools such as hammers and axes, flooring and boatbuilding and, due to its strength and flexibility, sports equipment such as tennis rackets and hockey sticks. It also makes the best firewood as the old rhyme goes "Ash green or ash brown is fit for a king with a golden crown". Ash has been associated with folklore over the centuries and the Druids included it as one of their guardian trees. Extracts of ash were used for its medicinal benefits such as feeding a teaspoon of sap to newborn babies or as a treatment for earache; ash bark was used to treat fevers and leaves to ease the effects of gout. It is interesting to note that ash branches contain quinine.

Autumn provides a good opportunity to spot fungi, that is the fruiting body above ground, whilst underground or in rotting tree trunks their vegetative structure or root system, mycelia comprised of hyphae continue, unseen, in their job of breaking down life's waste. I've seen a number of fungi on trees such as the colourful Turkey Tail as well as Honey Fungus but many fewer on open ground such as the white heads of Lawyers Wig and the Shaggy Ink Cap, which literally dies off to leave a black puddle. Other reports this month have included one from Jane Ingham who saw a buzzard being chased off by a crow but aided by a woodpigeon and another from James Skelton who didn't see but heard the rough bark of a rutting male fallow deer.

Mike F Johnson

Amie Electro

Amie Electro the friendly and professional Electrician you can trust.
Residential and commercial, single phase and three phase.
Complete and partial rewires.

Fusebox replacement and upgrades.

Inspection, testing, certification, maintenance and more!



Susanne Heldwein trading as
Amie Electro. Thorough,
methodical and solution

oriented work attitude. Active, positive,

straightforward and ethical approach. All works
carried out personally.. taking good care of
your property. Offering the full range of
domestic and commercial electrical services.

Qualified with distinction as electrical installer
(Munich, Bavaria, West Germany 1990). Established
in the UK in 2011. City & Guilds Level 3 Diploma
in Electrical Installations.

Part P registered.

*Domestic &
Commercial*

*Part P
registered*

01342 888654 / 07951 179146

mail@amie-electro.co.uk

Find the reviews

@ www.amie-electro.co.uk

Single Phase & Three Phase

*Amie
Electro*



MR Computing Ltd



The computer repair shop that comes
to you at an agreed time/day, no
waiting around and no need to
transport your IT equipment.

- NO FIX NO FEE
- Visiting computer/IT support for home & office
- New computer supply & setup to be familiar
 - Reliable wireless range improvement
- Computer speed up, repairs, data recovery
 - Remote support



Call: 01342 349109 / 0800 6129534

Email: office@mrcomputing.net

www.mrcomputing.net

Reviews: fb.com/mrcomputingltd/reviews

Outside In Locksmiths

Available 24 Hours

0800 772 39 72

Domestic, Commercial, Landlord.

Lock Outs, New Locks,
Lock Repairs.

Wooden, Upvc, Composite
and Aluminium doors locks
repaired.

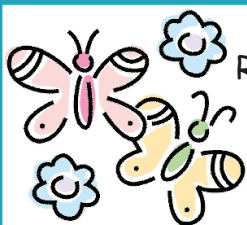
Fully Insured.

Free Quotes.



Checkatrade

outsideinlocksmiths.co.uk



BABYSITTING

Reliable teenage
girl from
Outwood
available for
babysitting.

Please contact Aine Martin
07462 275707



PILATES

THURSDAYS

9.30AM

Lloyd Hall, Outwood

BOOK NOW

Lianne McMillan , Lmc4fitness@gmail.com, 07957621702



The Pink Cake Company

tiered wedding cakes
cupcake towers
cakes with edible images
feature cakes
afternoon tea cakes

lynnemessenger@hotmail.co.uk
07780 705961

OUTWOOD NEWS

This space is just £160 p.a.
- only £16 per edition!

For more information and to check availability
please contact

John Mankelow:

01342 842764

or

Anne Morle:

01342 843336

anne.morle@outwood.org

Great value
holidays!

I can arrange...

Flights • Package Holidays • Hotels
Tours • Tailor made itineraries • Last minute
availability • Weddings & Honeymoons

For expert advice and assistance,
call Donna today!



Donna Rowe

0800 954 5216 • 07801 342309

donnar@travel-pa.com

www.travel-pa.com/donnar

ABTA
57032 / V0404



Home or Office
Desktop – Laptop – Network
Specialists

We Come to You!

On-site or pickup and return service

Fixed price repairs - 1000+ Clients
30 yrs+ experience - No Fix No Fee

Call Steve or Caroline

01342 834267

07771 666759

enquiries@sensiblepc solutions.co.uk

www.SensiblepcSolutions.co.uk

**KEEPING OUTWOOD
BUG FREE FOR 25 YEARS**

D C Read Builders & Landscapers



01342 843023



'Quality Workmanship'

info@dcreadbuilders.vpweb.co.uk
www.dcreadbuilders.co.uk



07706 467803



Connecting the
Arts and Crafts
community

UKCraftFairs.com

PAT CARTER

For all your electrical work

Tel: 01342 843883

Mobile: 07711 478890

Hear Here!

Having trouble with your hearing aid?

Do you need some new batteries?

Do you feel your hearing aid isn't working properly?

For free basic maintenance and free batteries,
funded by the NHS, contact audiology trained volunteer

Helen by ringing 02341 843550

or sending her a text on 07762 632620

You can see Helen

(without needing to make an appointment)

at the Church Hall (opposite the Co op) on

■ the **second Wednesday of every month from 10.30-11.30pm**
(during *WOW*, the community coffee morning)

■ the **first Friday of the month from 1.30-2.30pm**
(which coincides with *CAMEO*)

**If you are housebound Helen is happy to bring batteries
and advice to your home**

Activities for the Over 50's in Smallfield

I wonder how many folk remember Tandridge Parish Council trying to arrange Table Tennis and Short Mat Bowls for the over 50's in Smallfield about 35 years ago ? They used to come to the Church Hall with either a Table Tennis Table or a mat for Short Mat Bowls.

The Table Tennis carried on in the hall for many years, until we moved to the Centenary Hall where we now meet still on Thursday afternoons 1.30pm to 3.30pm. We play mostly doubles with the occasional game of singles. Due to the fact that we're 'old' we play to the rules we've always played to, so we go up to 21! [You've got more chance to 'catch up' and/or win].

The Church Hall wasn't really suitable for Short Mat Bowls, so it sat on the 'back burner' of a few folks minds until such time that the Centenary Hall was built.

Around 1995 the Smallfield Short Mat Bowls Club was formed and ran very well for many years.

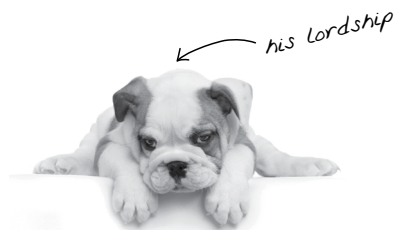
Now like other organizations we are struggling for members. We have three mats, so can easily have up to 24 people playing at a time. Currently we usually have only one mat out, it's so sad watching what was a thriving club dying. We do have spare woods, so all you need to do is come along [with a pair of flat soled shoes]

We'd even let you in if you are younger than 50! We still meet as we always have on Wednesday mornings, play starts at 10am but we have to get the mats out first and as always many hands make light work.

Both clubs would make you very welcome as they always have.

If you want more details please contact Rita Hendy on 01342 843629

Treating Your Pets Like Royalty



Crown Vet Clinic

1 The High Street
Nutfield, Redhill,
Surrey RH1 4HH
crownvets.com
t: 01737 822250

Opening times:
Monday - Friday
8.30am - 6.30pm
Saturday
9am - 11.30am

Miss Nicola Williams Consultation by
Mr Michael Taylor appointment

ANTIQUE FURNITURE RESTORATION

ALL ASPECTS OF
FURNITURE REPAIRS AND
POLISHING UNDERTAKEN

INCLUDING MODERN
FURNITURE

30 YEARS' EXPERIENCE

FREE ADVICE AND
ESTIMATES GIVEN - CALL

STEVE PEACOCK
01883 743879

Home Of Reflexology

Based in Outwood Village
(Home Visits Available)



Restore that feeling of well being, improve your sleep and take time for yourself

Reflexology is suitable for everyone, and appointments are available throughout the week

As well as a great Reflexologist, Catherine is a specialist practitioner, able to help those dealing with issues around cancer treatment, fertility & pregnancy, the menopause and sleep disturbances

Vouchers are available for that perfect gift!

To book or for more information contact Catherine

tel: 07741 300 720

email: catherine@surreyreflexology.com





Priya Williams

BA (Hons) Dip PFS

Financial Planner

Director of St. Julien Financial
Planning

Mobile: 07903 302515

Phone: 01959 528 788

Email: priya.williams@sipp.co.uk



ST. JULIEN

FINANCIAL PLANNING

Named as a trusted financial adviser in the Times and Telegraph (March 24), Priya has over 16 years of experience in the finance industry, having previously transitioned from an accountancy background. Financial Wellbeing is at the core of the service she provides, and she owns an accredited financial wellbeing practice. Priya is also a mental health first aider. She provides holistic advice to her clients and helps them build their financial futures through goals-based financial planning in the form of investment, retirement and estate planning.



Providing Solar PV & EV charging Services

NICEIC & MCS Certified, 'Trading Standards' and 'Which' Approved

Now providing Solar PV design and installation. Electric Vehicle charge point installation.

Electrical Installation, Inspection, Testing and Certification.

All circuit work undertaken. Part P compliant.

Find me on the MCS national database as well as 'Trading Standards' and 'Which Trusted Traders' websites where **reputation** and **reliability** matters.

Contact **Chris Yeldham** in **Outwood**

01342 844642, 07801 519789, chris@yeloshield.co.uk www.yeloshield.co.uk



OUTWOOD PARISH COUNCIL

THE PARISH COUNCIL IS CHANGING ITS MEETING DATE AND VENUE

It will now meet in the LLOYD HALL, BRICKFIELD LANE AT 7.30PM ON THE FIRST TUESDAY OF EACH MONTH.

The next meeting will be held on Tuesday 5th November 2024. There will then be a break for a month with the following meeting being held on Tuesday 7th January 2025. *Can you believe we are looking at 2025 already!!!?*

THE PARISH COUNCIL HAS IN PLACE AN EMERGENCY & RESILIENCE PLAN.

This is following best practice, and it is recommended that Councils adopt this. It sets out all kinds of emergencies that could befall a community and the best way of dealing with them to ensure that the community is safe. The Council has also produced a leaflet called 'In Case of Emergency' which gives residents telephone numbers and other vital information at a glance. This will be distributed shortly. This is not anything to worry about. The Council is trying to ensure that such information is readily available in one place. Keep it safe. It's a bit like insurance, useful when you need it.

DO YOU WANT TO REPORT WHAT YOU CONSIDER A PLANNING INFRINGEMENT?

Please 'Report a Breach' at <https://www.tandridge.gov.uk/Planning-and-building/Planning-applications-and-enforcement/What-if-someone-does-not-follow-the-planning-rules>

Only by doing this is the Planning Authority aware of any breaches. The Parish Council has no bigger voice than individual residents

DOES EVERYONE KNOW THAT WE HAVE A COMMUNITY ORCHARD behind the Windmill? Go and have a look, maybe pick some fruit.



CONTACT DETAILS

PARISH COUNCIL MEETINGS

Meetings are held each month except August and December

PARISH COUNCILLORS

Mary Baldock National Trust / Community Matters baldock.mary@googlemail.com 07936 166557
Helena Devlin Vice Chair - Highways velma9612@gmail.com 07718 278402
Jane Howard Footpaths / Bridleways janeweston899@btinternet.com 07753 602656
Anna Malley Planning anna.malley1@gmail.com 07802 581006
Nick de Wiggondene-Sheppard Chair - Planning nickdewiggondene@hotmail.co.uk 07788 923495

PARISH CLERK

Rodabe Rudin Email: parish.clerk@outwood.org Tel: 07592 151985
Address: 2 Dirty Lane, Ashurst Wood, West Sussex RH19 3RY

DISTRICT COUNCILLORS

Ashleigh Bolton 07717 881061
Sue Farr 07973 541297
Richard Smith 07702 077673

COUNTY COUNCILLOR

Chris Farr Chris.Farr@surreycc.gov.uk

SURREY COUNTY COUNCIL

General 03456 009009
Pot Holes 0300 200 1003
Verge Cutting 01342 837666

www.surreycc.gov.uk

MEMBER OF PARLIAMENT

Claire Coutinho
Email: claire.coutinho.mp@parliament.uk
House of Commons (Direct Line) 020 7219 7643
Constituency Office Oxted 01883 715782

TANDRIDGE DISTRICT COUNCIL

General 01883 722000

Noise, dangerous structures,
pest control, pollution, flooding,
tree enforcement etc.

Amenity Services 0800 7834843
Abandoned cars, flytipping,
graffiti or vandalism.

Rubbish collection BIFFA 01342 837346
Removal of unwanted vehicle 01883 732998

www.tandridge.gov.uk

GATWICK AIRPORT NOISE

Automated line 01293 311568
Flight tracker on Gatwick Airport website

REDHILL AERODROME NOISELINE

Please copy any response received 01737 888123
using this Noiseline to the Parish Clerk

LLOYD HALL

Booking Enquiries

Telephone 07435 882640
Email: lloydhall.outwood@hotmail.co.uk

Management Committee Secretary

Helena Devlin 07718 278402
Email: lhmc@lloydhall.org

NATIONAL TRUST

Harewoods Estate Office 01342 843225
Ranger - Ashlie Williams
Email: harewoods@nationaltrust.org.uk
www.nationaltrust.org.uk

NEIGHBOURHOOD WATCH

Tandridge Neighbourhood Policing Team
Email: tandridge@surrey.pnn.police.uk
Mark Osland Email: outwoodnw@gmail.com

POLICE

Emergency Attendance 999
Report non-urgent incidents 101

Crime Prevention Advice

Mark Howells

Email: mark.howells@surrey.pnn.police.uk

PS Brooker is the Southern Sergeant

Email: Joshua.Brooker@surrey.pnn.police.uk

The PC's for our area are Lee Newman and
Rowan Futter

Email: Lee.Newman@surrey.pnn.police.uk
Email: Rowan.Futter@surrey.pnn.police.uk

USEFUL NUMBERS:

PEST CONTROL (Rats, wasps etc.)

Balcombe Pest Control 01444 811916
BIFFA Special Collections 01883 712333
(Option 2)
Fridges, Freezers, Furniture etc.

OUTWOOD'S PUBLIC TRANSPORT

Note: 315 stops (and drops off)
anywhere in the village when hailed.
For simplicity the times are given for
Millers Lane.

**Please make timing adjustments
for stopping elsewhere.**

315 Cruiser Service

Times to and from Redhill, but this bus also
goes to Dormansland via Smallfield

Monday to Friday only

Leaves Millers Lane	07.48
	10.25
	13.50

The 10.25 and 13.50 buses also go
to East Surrey Hospital via Redhill.
Buses leave the hospital at 12.15
and 17.05 to return to Outwood.

Leaves Redhill Bus Station	09.00
	12.25
	17.15
<i>Fridays only</i>	15.37

On school days there are also
buses from Millers Lane at 07.45

East Surrey Rural Transport ESRTP

Bookings and information: 01883 701270

Website: www.rtp@esrtp.org.uk

*Information provided by
Outwood Parish Council E&OE*

OFFICE OF THE POLICE & CRIME COMMISSIONER FOR SURREY

Lisa Townsend
Police and Crime Commissioner



The public can contact the Office of the Police
and Crime Commissioner in the following ways:

Telephone: 01483 630 200

Email: SurreyPCC@surrey.police.uk

Website: www.surrey-pcc.gov.uk



COMMUNITY SPEEDWATCH

Are you willing to take on
the position of local
co-ordinator.

Please contact
Outwood Parish Council
for more information

CHURCH CALENDAR FOR NOVEMBER 2024

Sunday 3rd November

8.00am	BCP Holy Communion at Horne Church
9.30am	Holy Communion at Burstow Church
10.00am	Family Service at Horne Church
11.00am	Morning Worship at Outwood Church
4.00pm	All Souls Service at Burstow Church

Sunday 10th November

9.30am	Morning Worship at Burstow Church
10.00am	Holy Communion at Horne Church
11.00am	Morning Worship at Outwood Church
3.00pm	Café Church at Smallfield Church Hall
	There will be an act of remembrance at each of the three churches

Monday 11th November

11.00am	Short act of remembrance by the war memorial at Horne Church
---------	--

Sunday 17th November

9.30am	Holy Communion at Burstow Church
10.00am	Holy Communion at Horne Church
11.00am	Holy Communion at Outwood Church

Sunday 24th November

9.30am	Holy Communion at Burstow Church
10.00am	Holy Communion at Horne Church
11.00am	Holy Communion at Outwood Church

A Service of Thanksgiving

For those who have been bereaved to reflect and thank God for those loved and lost.



*All Souls Day, Sunday 3rd November 4.00pm
at St Bartholomew Church, Burstow*

DIARY OF EVENTS

NOVEMBER

Saturday 2nd	TABLETOP SALE - RBL 10.00am-2.30pm - Lloyd Hall	<i>(See page 3)</i>
	CHARITY QUIZ NIGHT 7.00pm - Lloyd Hall	<i>(See page 6)</i>
Tuesday 5th	WI MEETING - ANNUAL MEETING 2.30pm - Lloyd Hall	
Tuesday 5th	PARISH COUNCIL MEETING 7.30pm - Lloyd Hall	
Friday 15th	HORT. SOC AGM AND SUPPER 7.00pm AGM - 8.00pm - Lloyd Hall	<i>(See page 25)</i>
Tuesday 26th	FILM CLUB - "The Holdovers"	

DECEMBER

Tuesday 3rd	WI CHRISTMAS LUNCH 12.30pm - Lloyd Hall	
Friday 13th	SHOESTRING - "RAPUNZEL" 7.30pm - Lloyd Hall	<i>(See Cover)</i>
Saturday 14th	SHOESTRING - "RAPUNZEL" 2.30pm & 7.30pm - Lloyd Hall	

OUTWOOD VILLAGE WEBSITE www.outwood.org

The website Diary page, maintained by Outwood News, lists all village events *(of which we are aware)* taking place up to a year in advance.

Why not take a look to avoid a clash of dates!

LLOYD HALL

JOIN US AT THE LLOYD HALL ON NEW YEAR'S EVE

*IF YOU CAN'T MAKE UP A TABLE, CONTACT MICHELANN
AND YOU WILL BE ADDED TO ANOTHER*



We will be organising a New Year's Eve Party at The Lloyd Hall in a similar format to the excellent St Catherine's Balls of previous years whereby you bring your own meal/drinks.

Organise your table (up to 8), plan your meal/drinks amongst your table, deliver things to the Lloyd Hall during the afternoon. Spend the evening with your friends and be able to walk home. Games and quizzes to be provided, rather than a disco (no extra charges on the night). Prompt finish at 12:15 am. Clear up on Sunday morning with bacon sandwiches to be provided.

**Cost is only £25 per head to include welcome and midnight glass
of champagne, coffee/tea, raffle ticket and games/quizzes.**

Dress code is whatever you want it to be – fancy an excuse for fancy dress? Desperate to dust off your black tie and cocktail dresses? Prefer to spend the evening in PJ's?

Generally like to stay in jeans?

PLEASE CONTACT MICHELANN POLLARD AT ukmikia@hotmail.co.uk
TO BOOK TICKETS OR FIND OUT MORE.

WE WILL NEED ABOUT 30 PEOPLE TO PROCEED, SO PLEASE LET ME KNOW IF YOU ARE
INTERESTED SOONER RATHER THAN LATER.

FILM OUTWORLD CLUB

Lloyd Hall

Tuesday 26th
November
7.30 for 8.00

Drinks,
Tea and Coffee
Popcorn
and Ice Cream
available
£5 entrance
donation
£3 for members.



Why not join the
Club?
Usually
every last Tuesday
of the month.
It's sociable and
Fun !

Membership ONLY
£7.50 per year
All proceeds to Lloyd Hall

The film follows a teacher, who has to stay behind in his Boarding school, to look after a few boys who have nowhere to go at Christmas .

GARDEN MAINTENANCE

We are a friendly and reliable family run business, specialising in complete all year round garden maintenance.

- GRASS CUTTING
- WEEDING
- HEDGE CUTTING AND SHAPING
- SEASONAL TIDY-UPS
- JUNGLE CLEARANCE
- REGULAR VISITS
- MAINTENANCE PLANS
- FULLY INSURED

FROM PRIVATE
INDIVIDUALS TO
MANAGEMENT
COMPANIES



TRUSTED
LOCAL BUSINESSES ✓

MOWING MACHINE GARDENERS

For a no-obligation free estimate please call

01342 529365 or 07771 922281

www.themowingmachine.co.uk

WANT TO ADVERTISE IN OUTWOOD NEWS?

This space is just £90 p.a.- only £9 per edition!

For more information and to check availability please contact

John Mankelow: **01342 842764**

or

Anne Morle: **01342 843336**

01342 843883
07711 478890

PART P CERTIFIED
NICEIC APPROVED



Fusilier
Electrical Limited

Contact Pat or Adam Carter
email: cartpatri@aol.com

PAUL RICHARDS UPHOLSTERY

All aspects of Upholstery
and Re-Upholstery undertaken

Fabrics and Foams Available

Quality you CAN Afford

Traditional Workmanship by a Skilled Craftsman



All Upholstery Carried Out In Our Own Workshops

20 Years Experience

*From Chairs to Chaise, Seats to Settees
Portfolio Available*

Free Estimates and Advice

Trindles Farm, Plough Road, Smallfield, RH6 9JN

Phone/Fax: 01342 619277

Mobile: 07949 510877

Paul.Richards.upholstery@gmail.com

CHRIS ANDREWS GARDEN MAINTENANCE

CITY & GUILDS HORTICULTURE

GRASS CUTTING,

HEDGE CUTTING,

TREE & SHRUB PRUNING,

BEDS & BORDERS WEEDED

& MAINTAINED, PLANTING,

GENERAL HANDYMAN SERVICES

ESTABLISHED 20 YEARS

REFERENCES AND PHOTOS AVAILABLE

CALL CHRIS

TEL. 01342 841583

MOB. 07810 748852

4 WHITEWOOD COTTAGES, WHITEWOOD LANE,
HORNE, RH9 8JR

L.A. ROWE

PLUMBING & HEATING

Tel: 01342 844 600

Mob: 07801 531 423

Working locally for 17 years

Bathrooms • Showers

Kitchens • Boilers

Central Heating

Gas Installation

Guttering & Leadwork



reg. number
028229W



164781



Gayton Veterinary Group

www.gayton.co.uk



We are open from Monday to Saturday
by appointment.

Monday to Friday | 9am - 7pm

Saturday | 9am - 4pm

Gayton House,
40 Hatchlands Road,
Redhill, Surrey RH1 6AT

01737 761475

7 South Parade,
Horley Row,
Horley, Surrey RH6 8BH

01293 771560



Claire Coutinho
MP
*MEMBER OF PARLIAMENT
FOR EAST SURREY*

Since I was elected, I've held regular surgeries with local residents to talk about the issues that matter to them.

I've also been holding regular remote surgeries by telephone, so if you need any help or want to raise an issue of importance to you, please don't hesitate to email or call me to set up a meeting.

Claire

0207 219 5972
@clairecoutinho.mp
@parliament.uk

claire4eastsurrey
#clairecoutinho

Approved by the Electoral Commission for the 2015 General Election

Many pensioners are due to lose their Winter Fuel Payments this year as part of a new Government policy. I voted against the Government's plans to scrap the Winter Fuel Payment. Over 17,000 pensioners across East Surrey are set to lose up to £300 if the Government's plans go ahead. Although this is being put forward as a cost saving measure, it is not likely to raise any money and I don't think enough has been done to ensure pensioners in fuel poverty can make it through the winter. The Conservatives will continue to campaign against this damaging policy.

As we approach winter, you might have seen me and my staff out and about in East Surrey delivering posters to local services and pinning them up on parish council notice boards. That is because I have restarted my campaign to get the word out on how to apply for pension credit. Many pensioners are not aware that if you are in receipt of Pension Credit, you will also receive Winter Fuel Support, a free TV licence, a Warm Home Discount, and much more.

Please check your eligibility or ask a friend or family member to help you check whether you can access this critical support. To apply for Pension Credit, all you need is your National Insurance number, your Bank details, and information about your savings. To check if you are eligible please call 0800 991234, or apply online www.gov.uk/pension-credit.

One of the highlights of the month was attending the opening of the new pool at St Mary's School in Oxted. The students braved the rain and put on one of the best relay races I've seen. Seeing them swim in soggy sombreros is certainly something I won't forget. Cllr Cameron McIntosh and I weren't as brave as the children and hid under the provided cover. In our defence, the pool was heated, but the rain was not. I want to thank Cllr McIntosh, the wonderful team at St Mary's, and everyone involved in the project for all their hard work to deliver this pool.

I also wanted to thank Inspector Lindsey Whatley, the Borough Commander for East Surrey, for taking the time to meet with me recently to discuss residents' concerns including worries about anti-social behaviour, traffic control measures, and traveller sites.

Whilst being updated on the relocation of the police headquarters, I told the inspector that keeping the front desk service at Caterham was very important to people in the town.

After the shoplifting roundtable a few months ago, I was pleased to hear the parish council's work to install CCTV cameras in Oxted was having such a positive impact. I'm also grateful to the officers who have done so much to tackle multiple criminal gangs who were shoplifting on our high streets. There is still more to do, but our fantastic police officers are making good progress.

I've also been continuing my campaign against the Government's tax on independent schools, which will affect 1 in 4 children in Surrey. I spoke in Parliament to raise three major concerns about the Government's plans to do so. First this will hit tens of thousands of children with SEND, second it will also hurt all children in the state sector who will face larger class sizes and lastly it won't raise any money. This is a purely ideological decision which has been rushed out ahead of any impact assessment of how it will affect children.

This is about children's outcomes first and foremost. The Government is yet to respond to the letter of Surrey Conservative MPs asking them to rethink this tax.

You can watch my speech on my Facebook page.

OUTWOOD HORTICULTURAL SOCIETY

CHICKEN AND HAM PIE SUPPER



(provided by Outwood Butchers)



followed by fruit crumbles & coffee

gluten free and vegan options available - please mention when booking

**Friday 15th November
Lloyd Hall - 7.30pm**

preceded by the AGM at 7.00pm

ALL WELCOME

£12.50 Members / £15.00 Non-Members

Bring your own drinks and glasses

2025 Subscriptions (£5) can be paid at the Supper

Exciting prizes to be won in the Raffle!

To reserve places or further info please email:

outwoodhortsoc@gmail.com or phone Jane

07753 602656

PLEASE PRE-BOOK YOUR PLACES BY TUES 12th NOV!

ALEX JONES

FUNERAL DIRECTORS

Serving the community since 1996

- OFFERING A CARING AND PERSONAL SERVICE
- 24 HOURS A DAY, 365 DAYS OF THE YEAR
- BEAUTIFUL CHAPELS OF REST
- HOME VISITS AVAILABLE
- MEMORIAL MASONRY
- PRE-PAID FUNERAL PLANS
- AN INDEPENDENT FAMILY OWNED BUSINESS



LINGFIELD

1 East Grinstead
Surrey
RH7 6EP
Tel: 01342 832 534

OXTED

92 Station Road East
Surrey
RH8 0QA
Tel: 01883 730 383

FOREST ROW

1 Ashdown Court
Lewes Road
East Sussex
RH18 5EZ
Tel: 01342 822 399

EDENBRIDGE

70 High Street
Kent
TN8 5AS
Tel: 01732 860 047

Golden Charter 
Smart Planning for Later Life



GC-LIFT 31/361 - 0623

Alex Jones Funeral Directors Limited is an appointed representative of Golden Charter Limited trading as Golden Charter Funeral Plans which is authorised and regulated by the Financial Conduct Authority (FRN:965279).

The
BELL INN



**BOOKING IS
ALWAYS ADVISABLE**

CHRISTMAS BOOKINGS ARE NOW BEING TAKEN

**Phone: 01342 891835
www.belloutwood.co.uk**

LLOYD HALL

The building offers attractive and modern facilities for many types of function.

Wedding Receptions, Banquets, Private Parties and Dinners can be accommodated, as well as regular bookings by local groups and organisations.

The Main Hall can seat over 100 while the two rooms of the Chilvers Suite are suitable for smaller meetings and clubs.

The Kitchen is well-equipped with commercial-quality fittings and fixtures.

All or part of the accommodation is available for hire at an hourly or daily rate.

For more information and to check availability contact the Booking Secretary:

07435 882640

enquiries@lloydhall.org

www.lloydhall.org



What's on at Lloyd Hall

Here's a full look at the activities in the Lloyd Hall each week.

Go on - try something new!

<u>When</u>	<u>What</u>	<u>Contact</u>
Monday		
10.00	Wood Carving	b.monk031@btinternet.com
Tuesday		
14.30 (1st Tuesday of month)	W.I.	carolinedurance@me.com
19.30 (last Tuesday of month)	Film Club	carolinedurance@me.com
Wednesday		
9.30	Yoga	reigatemassageandyoga@gmail.com
11.00	Coffee Morning	ukmikia@hotmail.com
13.30	Yoga	jdysn7@hotmail.com
18.00	Dance Classes	harmonydancing@hotmail.co.uk
Thursday		
9.30	Pilates	lmcfitness@icloud.com
15.00	Dance Classes	harmonydancing@hotmail.co.uk

COFFEE MORNING

**We hold a Coffee Morning at Lloyd Hall
every Wednesday from 11.00 to 12 noon**

Everybody is very welcome to come along and make
some new friends whilst enjoying real coffee
and homemade cake

- only £3.50 coffee / £3.00 tea

Price includes cakes, savory bakes and refills.

COFFEE MORNING NEEDS VOLUNTEERS

Could you spare 2 hours roughly every other month? Our regular Wednesday Coffee Mornings need a few more volunteers. Alternatively, if you have a friend that you “just don’t see often enough”, it’s a great way to spend a couple hours catching up while giving back to the community.

We have several regulars who really count on Wednesday Morning Coffee as a chance to get out once a week.

It is a great way to invest in our community and get to know some of your neighbours.

Please contact Michelann Pollard at ukmikia@hotmail.co.uk to find out more.

OUTWOOD NEWS COPY DATES

ISSUE

December & January 2025

February 2025

March 2025

COPY DATE

22nd November

17th January

21st February

NOTE: Please submit copy either as finished artwork (a PDF of the correct size) or, if using WORD, in the simplest form. Please avoid using text boxes.

CONTENTS

	<i>Page</i>
CHARITY QUIZ NIGHT 'Breast Cancer Now'	6
CHURCH NEWS	4, 5 & 19
CHURCH SERVICES	19
CONTACT DETAILS	17
DIARY	20
NATURE WATCH	9
OUTWOOD HORT. SOC.	25
PARISH COUNCIL	16 & 17
POLICE & CRIME COMMISSIONER	18
PUBLIC TRANSPORT	18
ROYAL BRITISH LEGION	3
SHOESTRING	Cover
W.I.	7



If you're compassionate,
caring and kind,
then **#YouCanCare.**

Join an award-winning company doing
amazing things to help seniors live well
and comfortably at home.

Join our *team*

01737 529793

lindsey.blake@homeinstead.co.uk

homeinstead.co.uk/reigate



"I *love* that I get
plenty of time to
sit and chat with
Linda. We have
loads in *common*
and lots to talk
about."

Lily Graftt, CAREGiver

Each Home Instead franchise office is independently owned and operated. Copyright © Home Instead 2021



MULTI-AWARD WINNING GARDEN DESIGNERS, PLANTERS & KEEPERS

We Love Plants Ltd is a renowned, multi-disciplinary design studio founded by Director and Designer Nic Howard with an enviable reputation for creating timeless, beautiful, plant-focused gardens.

The studio is a long established Surrey-based garden design and construction company designing, creating and planting beautiful gardens in Surrey, Sussex and the Home Counties. Our bold, imaginative and impactful approach helps our clients realise their garden and landscape ambitions.

**we love
Plants**
GARDEN DESIGN
BY NIC HOWARD

01883 744 020 | we-love-plants.co.uk | hello@weloveplants.co



@nichoward



Nic Howard Garden Design



REPUTATION FOR TOP QUALITY ROOFING



NFRC
LEADING ROOFING EXCELLENCE



FOLAN & JOHNSON **ROOFING SPECIALISTS**

Established in 1988



Checkatrade

Traditional Roofing • Slating • Leadworks • Three Layer Flat Roofing • Horsham Stone • Velux Windows



- Handmade Clay Peg Tiles • 3 Layer Felt Flat Roofing • Traditional & Contemporary Tiling
- Natural Slate • All Aspects of Leadwork to BS1178 • CSCS Compliant

Tel: 01293 784304 • Mob: 07768 695616 • info@folanandjohnson.co.uk • www.folanandjohnson.co.uk

**Free estimates
& fully insured**



PAChandyman
services

PAC Handyman Services is your local solution to everyday building, maintenance and installation projects within the home and garden.



Tel: 01342 843348 | 07711 939370 | www.pac-handyman.co.uk